



# COLLARD<sup>®</sup>

## L.E.M.<sup>®</sup> SAWHEAD FOR EXTREME DUTY TREE PRUNING



The L.E.M.<sup>®</sup> Sawhead module was designed for mounting to many different types of equipment such as : Tractors with front loaders, Skid Steer Tractors, Compact Excavators etc. This Sawhead comes with a heavy 4" square beam for mounting. The body of the Sawhead is made of rust proof anodized material which is light weight, but stronger than steel. This housing module will not deform so lifetime warranty applies.



Distributed By:



13477 Benson Ave. • Chino, CA 91710 • Ph: 909/548-4848 • Fax: 909/548-4747

[www.gearmore.com](http://www.gearmore.com) • [sales@gearmore.com](mailto:sales@gearmore.com)

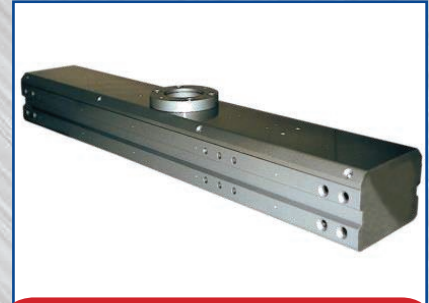


**COLLARD**<sup>®</sup>

# L.E.M.<sup>®</sup> SAWHEAD

## FEATURES:

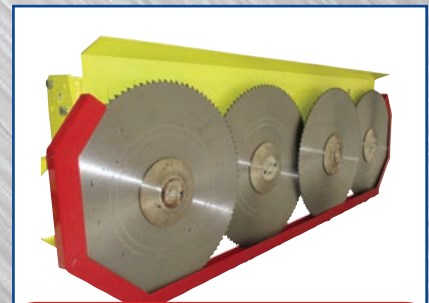
- 4-24" diameter stainless steel saw blades
- Total cutting length of 80"
- 45 cc hydraulic motor produces 24 to 37 GPM, maximum pressure 3000 PSI
- Saw blades turn at a maximum of 2600 RPM
- The body of the saw blades is made of rust proof anodized material which is light weight but stronger than steel
- The saw blade housing module will not deform, so lifetime warranty applies
- Equipped with universal hydraulic block for limiting the cutting rotation speed of the blades
- Special centralized greasing system to each saw blade bearing
- Fast easy belt tension system with no need to remove the blades in order to adjust tension
- Heavy 4" square steel tubing for easy mounting to the operating machine
- Metal blade safety guard when unit not in use
- The sawheads are also available in 2 or 3 blades



**Saw blade housing module**



**Hydraulic motor, block & protection guard**



**Safety guard when unit not in use**

Your **COLLARD**<sup>®</sup> Dealer

## SPECIFICATIONS:

Order Code	Model Number	Description	Capacity	Hydraulics	Weight
5812.9007	LEM 6004	Sawhead, 4 Blades	max. 6"	24 to 37 GPM	555#

**CLICK HERE, HERE OR HERE TO SEE VIDEOS OF THE L.E.M. SAWHEAD**

*Specifications Subject To Change Without Notice*

13477 Benson Ave. • Chino, CA 91710 • Ph: 909/548-4848 • Fax: 909/548-4747 • sales@gearmore.com

Form #CD0020-17