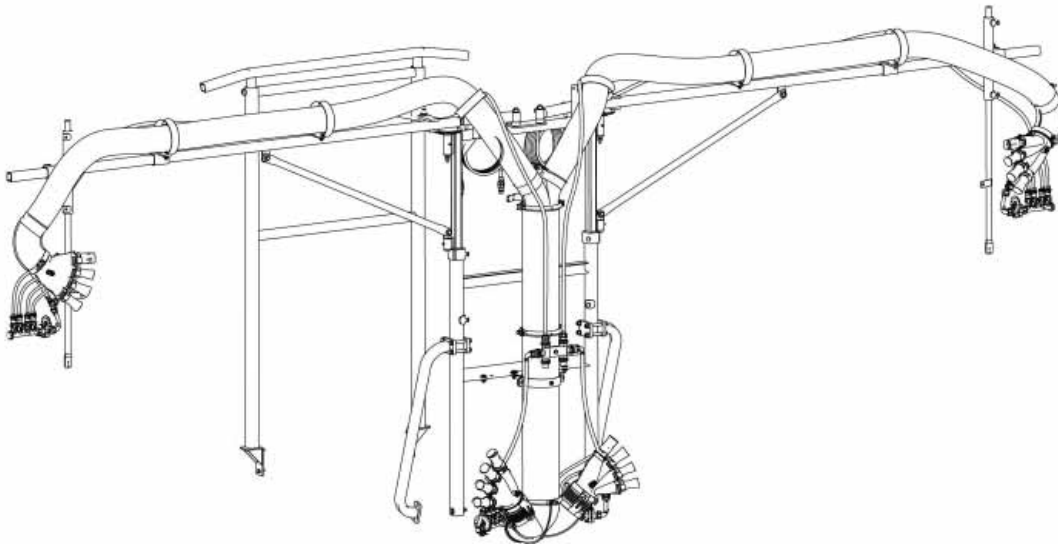


**GEARMORE INC.**

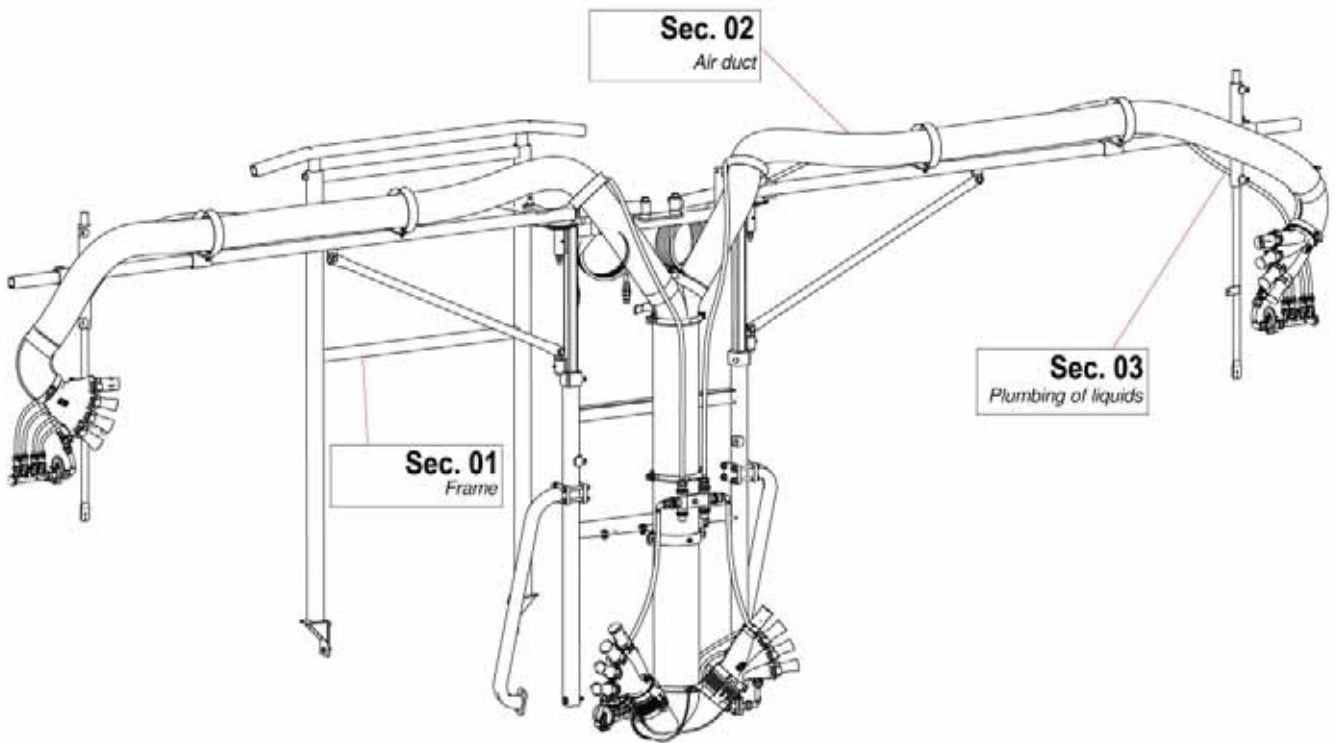
# **VENTURI AIR SPRAYERS 2 ROW DISTRIBUTION HEAD**



**Parts Manual For  
TCF2M2M50T12L Distribution Head  
For T50 Sprayers**

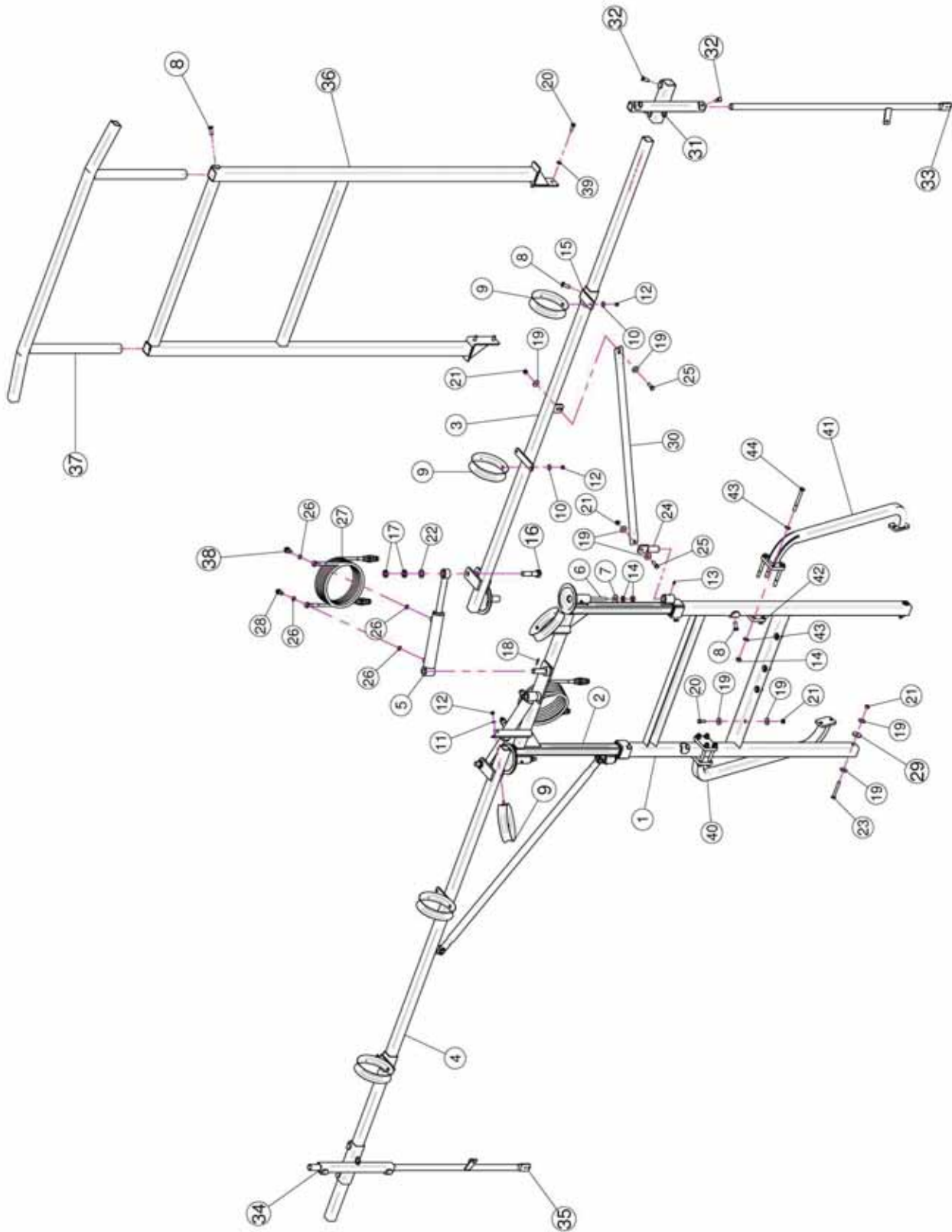
**June 2013**

# TABLE OF CONTENTS



<u>SECTION</u>	<u>DESCRIPTION</u> .....	<u>PAGE</u>
1	<b>Frame</b> .....	<b>1-2</b>
2	<b>Distribution Heads &amp; Air Tubes</b> .....	<b>3-4</b>
3	<b>Liquid Hose &amp; Fittings</b> .....	<b>5-6</b>
4	<b>Manifold &amp; Shut-Off Valves</b> .....	<b>7</b>
5	<b>Dial-A-Rate</b> .....	<b>8</b>

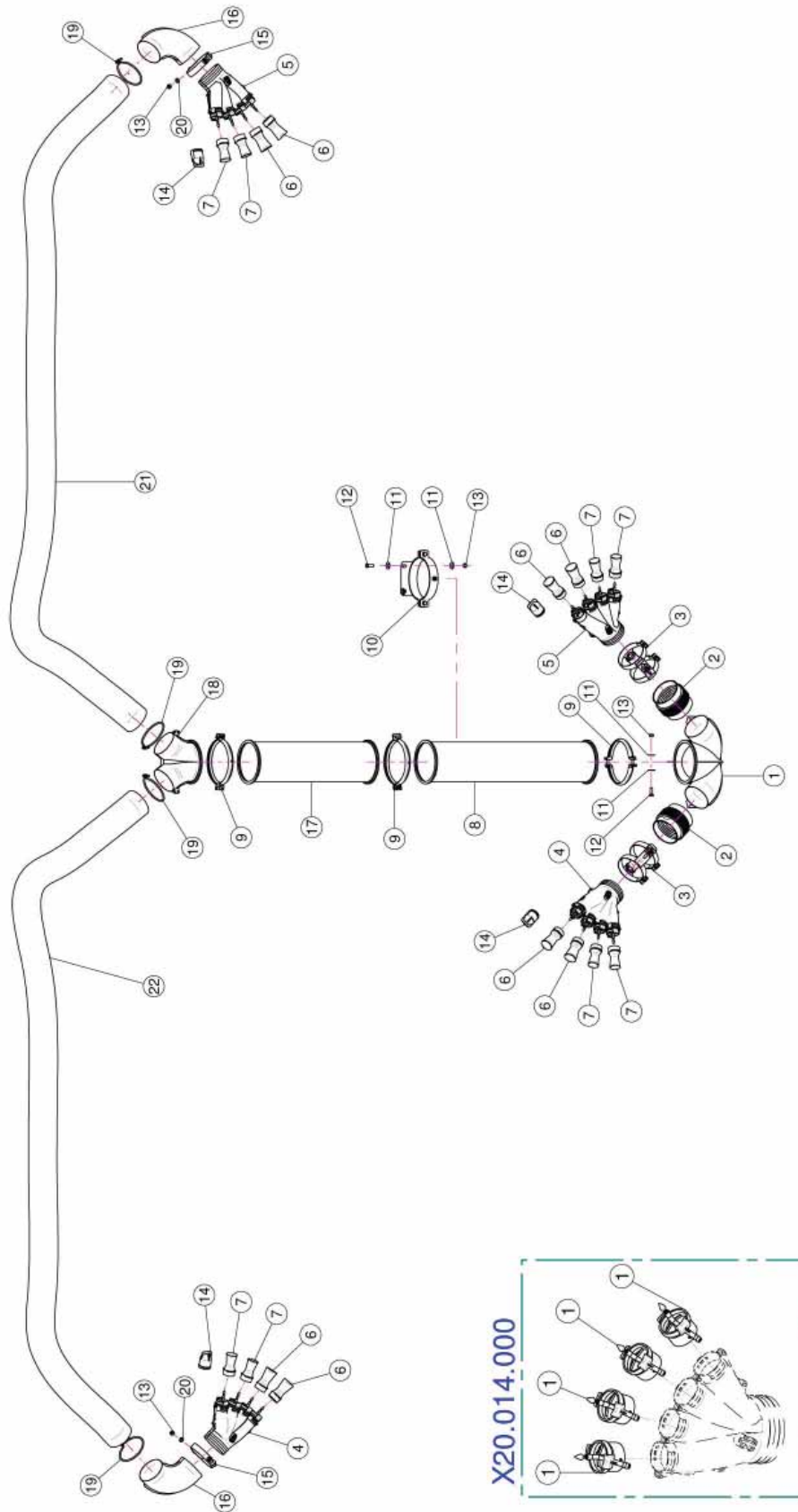
# Sec. 01 - FRAME



## Sec. 01 - *FRAME*

<u>REF.</u>	<u>QTY.</u>	<u>PART NO.</u>	<u>DESCRIPTION</u>
1	1	21.049.100	Central Frame
2	1	21.043.101	Sliding Frame
3	1	21.045.102	Right Leg
4	1	21.046.102	Left Leg
5	2	02.838.01C	Side Jack
6	2	BRF.012.010	Pipe M12 L=100
7	2	RP.012.036	Washer D12 x 36
8	8	TE.012.030T	Screw TE 12 x 30
9	6	20.227.000	Small Pipe Guide Ring
10	4	RP.008.024	Washer D.8 x 24
11	2	RP.008.000	Washer D.8
12	6	DA.008.0AG	Self Locking Nut M8
13	4	ID.006.001	Greaser
14	12	D0.12.5587G	M12 Nut
15	2	21.047.000	Sliding Ring
16	2	TE.020.080	Screw TE M20 x 80
17	4	DO.20.5589G	Lower Nut M20
18	2	SE.006.030	Elastic Pin D.6 x 30
19	20	RP.010.030	Washer D.10 x 30 mm
20	8	TE.010.030T	Screw TE M10 x 30
21	10	D0.10.5587G	Nut M10
22	2	RP.020.000	Washer D.20
23	2	TE.010.080	Screw TE M10 x 80
24	2	21.116.000	Pin With Tie-Rod Attach
25	4	TE.010.035T	Screw TE 10 x 35
26	8	02.472.000	Copper Washer
27	4	20.900.600	Oil Pipe For Jack L=6000
28	2	02.408.000	Jack Eye Right Union
29	2	RP.010.040	Washer D.10 x 40
30	2	21.044.002	Tie Rod
31	1	20.685.200c	Tubing Bracket
32	4	TE.012.025T	Screw TE M12 x 25
33	1	20.685.600Z	Right Nozzle Fixing Arm
34	1	20.874.100	Left Sliding Ring
35	1	20.685.500Z	Left Nozzle Fixing Arm
36	1	50.226.700	Tie Rod
37	1	50.230.500Z	Sliding Leg Support
38	2	20.718.000	Flow Regulator
39	4	RP.010.000	Washer D.10
40	1	50.232.200	Left Tie Rod
41	1	50.232.300	Right Tie Rod
42	2	20.937.000	Bracket
43	16	RP.012.000	Washer D.12
44	8	TE.012.110	Screw TE M12 x 110

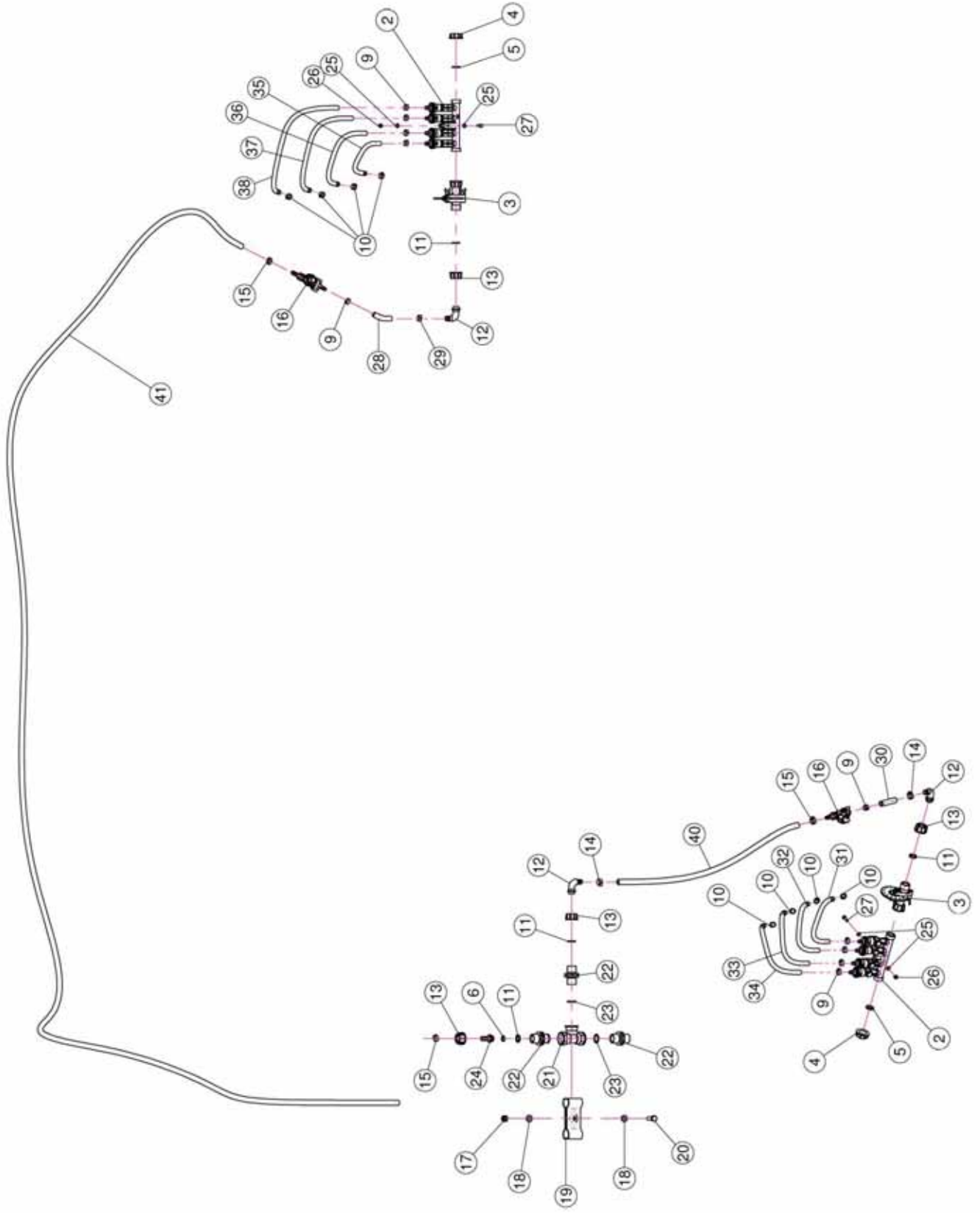
# Sec. 02 - DISTRIBUTION HEADS & AIR TUBES



## Sec. 02 - *DISTRIBUTION HEADS & AIR TUBES*

<u>REF.</u>	<u>QTY.</u>	<u>PART NO.</u>	<u>DESCRIPTION</u>
1	1	02.996.100	Lower Bend
2	2	02.021.000	Flexible Sleeve
3	2	21.080.000	Right Clamp Ø 127
4	2	20.014.000DX	Four Outlets
5	2	20.014.000SX	Four Outlets
6	8	00.008.050	Nozzle 8/50
7	8	00.006.050	Nozzle 6/50
8	1	02.189.000	Extension D.175 x 800
9	3	05.616.000	Pipe Clamp D.175
10	1	20.503.000	D.175 Clamp Heads Fixing
11	6	RP.010.030	Washer D.10 x 30 mm
12	3	TE.010.030T	Screw TE M10 x 30
13	5	D0.10.5587G	Nut M10
14	4	02.127.000	Cap Nozzle Plug
15	2	00.127.001	Clamp D.127 With Screw 10 x 25
16	2	04.845.000	Elbow 90° D.120
17	1	02.188.000	Extension D.175 x 600
18	1	02.739.000	Body Head
19	4	F0.120.000	Clamp D.120
20	2	RP.010.000	Washer D.10
21	1	02.239.000	Hose D.120 L=3000 (Per Foot)
22	1	02.239.000	Hose D.120 L=3000 (Per Foot)
<b>20.014.000</b>			
1	4	20.016.01C	Venturi Body

# Sec. 03 - LIQUID HOSE & FITTINGS

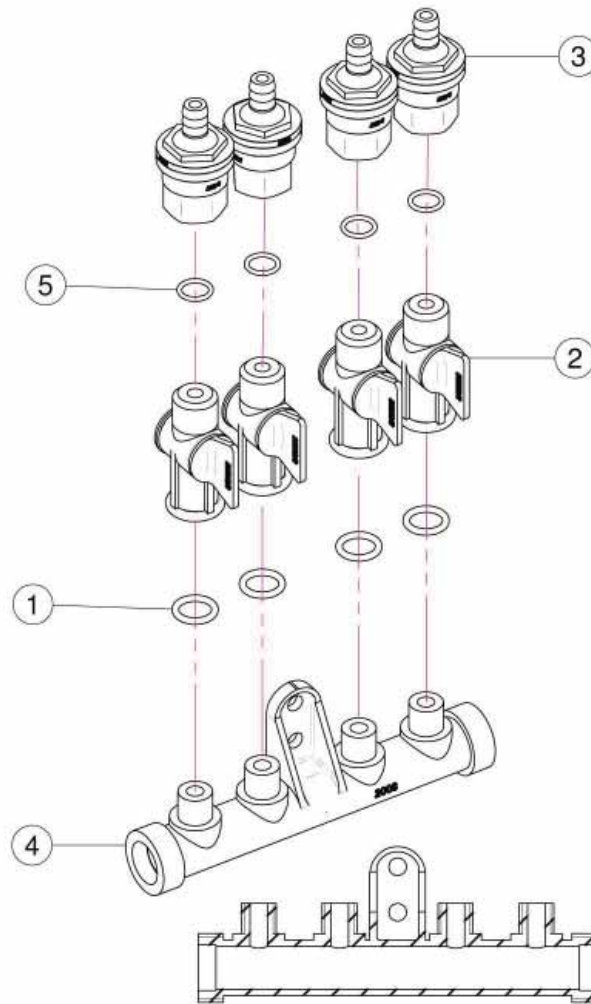


## Sec. 03 - LIQUID HOSE & FITTINGS

<u>REF.</u>	<u>QTY.</u>	<u>PART NO.</u>	<u>DESCRIPTION</u>
1	2	02.008.304C	4 Pipes Distributor
2	2	02.008.304C	4 Taps Liquid Manifold
3	2	02.150.000	Rotation Disc Regulation
4	2	02.182.000	Female 3/4" Cap
5	2	02.030.010	Gasket
6	2	OR.000.117	13.1 x 18.34 x 2.62 O-Ring Gasket
9	20	FC.013.5.015	Hose Clamp
10	16	FC.012.5.014	Hose Clamp
11	8	02.349.000	17 x 23 x 3 Flat Gasket
12	6	00.055.046R	Curaved Union With R.H. D.14
13	8	00.055.045	3/4" fly Nut
14	4	FC.016.5.018	Hose Clamp 16.5 - 18
15	6	FC.015.5.017	Hose Clamp
16	4	00.226.05C	Complete Antidrop
17	1	DA.010.0BG	Self Locking Nut M10
18	2	RP.010.000	Washer D.10
19	1	02.999.000	T Union Fixing Bracket
20	1	TE.010.035T	Screw TE 10 x 35
21	2	02.396.000	Union 3/4" - 3/4" - 3/4" F.
22	6	02.380.000	Nipple 3/4"
23	6	OR.004.081	20.22 x 3.53 O-Ring Gasket
24	2	02.122.000	D.13 Union
25	16	RP.006.000	Washer D.6
26	8	D0.06.5588G	Nut M6
27	8	TE.006.020T	Screw TE M6 x 20
28	2	02.213.0000	Hose D.10 L=70 (Per Foot)
29	2	FC.014.5.016	Hose Clamp
30	2	02.213.000	Hose D.10 x 16 L=70 (Per Foot)
31	2	02.217.000	Hose D.8 x 13 L=310 (Per Foot)
32	2	02.217.000	Hose D.8 x 13 L=330 (Per Foot)
33	2	02.217.000	Hose D.8 x 13 L=390 (Per Foot)
34	2	02.217.000	Hose D.8 x 13 L=410 (Per Foot)
35	2	02.217.000	Hose D.8 x 13 L=250 (Per Foot)
36	2	02.217.000	Hose D.8 x 13 L=310 (Per Foot)
37	2	02.217.000	Hose D.8 x 13 L=390 (Per Foot)
38	2	02.217.000	Hose D.8 x 13 L=450 (Per Foot)
40	2	02.213.000	Hose D.10 x 16 L=700 (Per Foot)
41	1	02.213.000	Hose D.10 x 16 L=4200 (Per Foot)

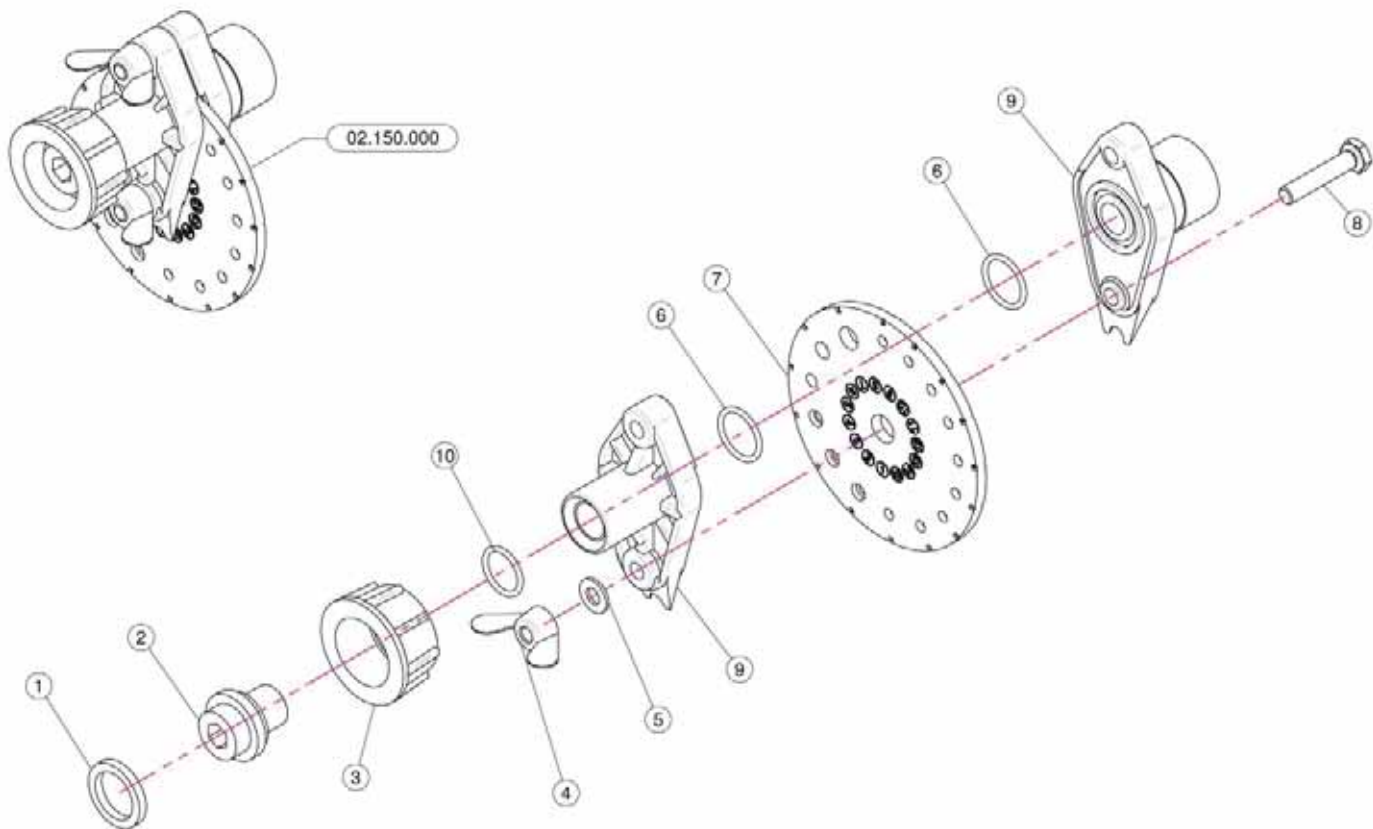


## Sec. 04 - MANIFOLD & SHUT-OFF VALVES



<u>REF.</u>	<u>QTY.</u>	<u>PART NO.</u>	<u>DESCRIPTION</u>
		<b>02.008.304C</b>	<b>Complete Assembly</b>
1	4	OR.000.117	13.1 x 18.34 x 2.62 O-Ring Gasket
2	4	20.202.100	Tap Assembly
3	4	00.227.01C	Anti-Drip Valve
4	1	02.008.000	Sprayheads Liquid Manifold
5	4	OR.002.043	10.82 x 14.38 x 1.78 Nbr 70 O-Ring Gasket

## Sec. 05 - DIAL-A-RATE



<b>REF.</b>	<b>QTY.</b>	<b>PART NO.</b>	<b>DESCRIPTION</b>
1	1	02.349.000	17 x 23 x 3 Flat Gasket
2	1	02.117.000	Adaptor Nipple
3	1	2002030	3/4" Fly Nut
4	2	DF.OTT.006	Wing Nut M6
5	2	RP.006.000I	INOX Washer D.6
6	2	OR1560178	D.15.6 x 1.78 O-Ring
7	1	02.148.000	Regulator Disc
8	2	TE.006.030I	INOX M6 x 30 Bolt
9	1	02.147.000	Regulator Body
10	1	OR1242178	O-Ring D.12.37 x 2.62